

Container Dwell Time Management System (CDTMS)

The Container Dwell Time Management System (CDTMS) enables a port to easily measure and monitor dwell times and in turn improve their customers' own logistics planning capabilities. Our automated system allows a port to identify where the hold-ups are located and helps to more effectively develop strategies to reduce delays and improve efficiencies. For customers, the ability to access the web-based self-serve application, 24/7, provides the added benefit of monitoring up-to-date container status and movement history, from vessel discharge to deramping at destination, regardless of which shipping line, terminal, or railway used.

SYSTEM FEATURES

The Container Dwell Time Management System is designed to capture every movement of each container, and provide status updates, as well as dwell and transit time calculation, analysis, and reporting. CDTMS automatically accepts electronic data interchange (EDI) feeds as they arrive, and stores them into a data repository. CDTMS transforms and merges received event files to create a clear and distinct profile of containers arriving into a port. The collection of sufficient empirical data allows for the analysis of dwell and transit time patterns and trends. This serves as a key tool in identifying and investigating the causes of unacceptable dwell and transit times so that preventive and corrective action can be taken.

The Benefits:

- Provides baseline data for comparison and marketing
- Facilitates information sharing and collaborative systems
- Identifies areas for improvement
- Allows for planning and prediction
- Saves time by freeing staff resources



**AAPA Information Technology Award
for Improvements in Intermodal
Freight Transportation, 2007**



Microsoft
GOLD CERTIFIED
Partner

Nicom has been in the IT business for over 27 years. Our technicians are Microsoft Certified Professionals and Nicom is a Microsoft Gold Certified Partner.



Suite 8, 6960 Mumford Rd.
Halifax, Nova Scotia
Canada B3L 4P1
Toll Free: 1 877 454 4499
info@nicommaritime.com
www.nicommaritime.com

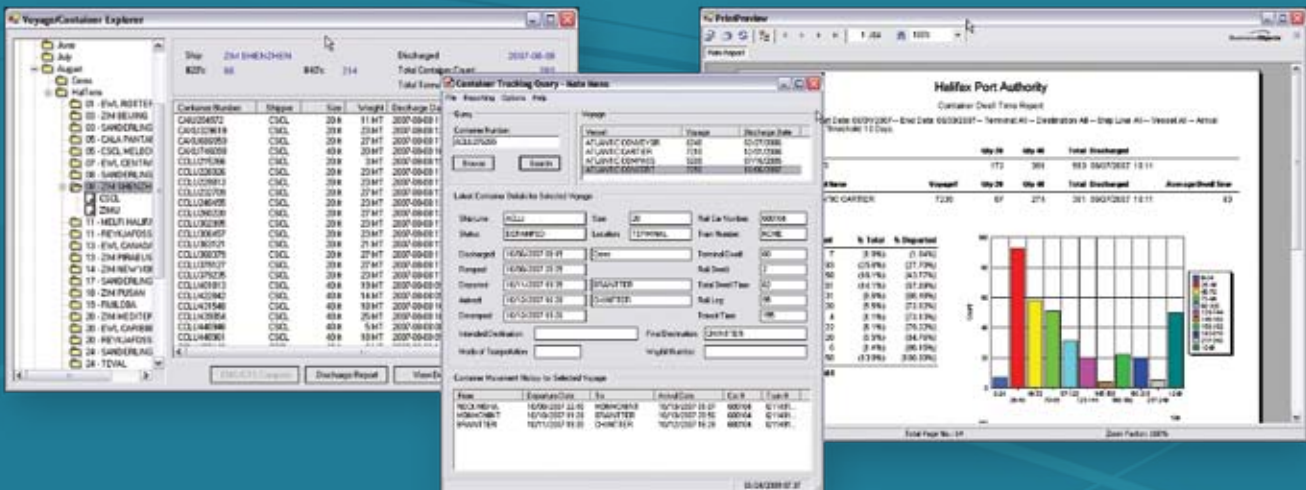
Web Based Inquiries

A container's status and movements can be viewed online through the port's website. The web based query capability allows a user to enter and edit a list of container numbers, and to retrieve a grid of status information. Clicking on any container number from this main status grid will display its detailed dwell time and movement information.

REPORTING CAPABILITIES

CDTMS has the ability to perform queries on individual container numbers and display last reported location, status, and movement history.

Statistical reports analyzing container dwell and transit times provide the information both empirically and graphically. The reports are available on-demand, and can be based on a number of parameters, including date ranges, originating terminal, destination, ship line, and vessel.



WHO WE ARE:

Nicom Maritime are experts in management information solutions, offering both professional advisory services and software products to the seaport industry. We help our clients identify their business needs and recommend technology solutions that streamline communication processes, improve efficiencies and reduce operational costs. We provide our clients with the best information technology advice and in turn, the best solutions.